

OMAHA SKI CLUB

August 2003

Current Events

Aug 8 (Fri) Royals Baseball Game

Game time 7:05 pm.

Aug 12 (Wed) Social Gathering

Old Chicago, 76th & Cass Time 7:00 pm

Aug 16 (Sat) Beach Party at

Ron Rohrs' home in Fremont.
See article in newsletter for details.

Aug 17 (Sun) Corporate

Cycling Challenge 8:00 am in downtown Omaha

Future Events

Sept 2 (Tue) Board Meeting,

McCall Press 3219 Leavenworth.
Time 6:30 pm. All members welcome.

Sept 9 (Tue) Social Gathering,

Senor Matias, 90th and Arbor,
7:00 p.m.

Oct 12 (Sun) Trip Sign-up

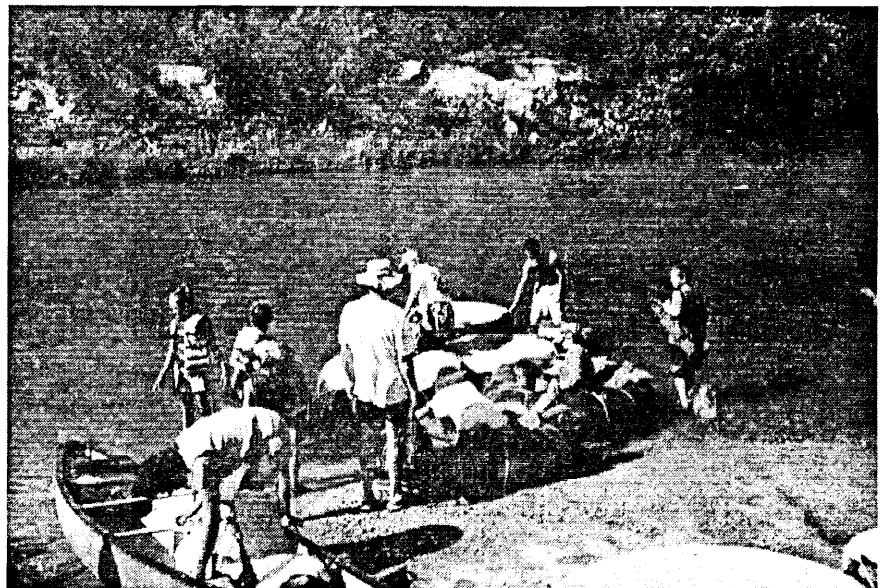
Party, Regency Lake and Tennis Club, 6:00-8:00 p.m.

Sally Dier, Vice-President Activities

OSC – Good times all
year round



Ben, Andrea, Andy, Terri at Monarch, March, 2003



Getting back in the river, Niobrara Trip, July, 2003

www.omahaskiclub.org



UNITED STATES
RECREATIONAL
SKI ASSOCIATION

The Nation's 34th Ski Week

\$1200
+
Lifts

Ski Beautiful Banff/Lake Louise

February 21 – 28, 2004



The Castle in the Forest



World Class European Spa



We welcome Families

Special activities for children 7 and older

- Children's Welcome Party
- Children's RACING program
- Children's movie Apre' party

Price Includes-

- **Lodging:** 7 Nights at the Banff Springs Hotel "The Castle in the Forest" with a world class Spa
- **Welcome Party:** with food, drinks, music & dancing
- **4 Après Ski Parties:** food, drinks, music & dancing
- **4 Races** – Qualifier, Giant Slalom, Slalom, Wax Race
- **Pub Crawl:** Tour the bars in downtown Banff, win prizes
- **Souvenir T- shirt and Ski Week Pin**

Optional-

- Renaissance Awards Banquet in the Medieval dining room
- Torchlight dinner and parade at Lake Louise
- Famous Sundowner party at Sunshine Village

Deposits:

Initial Deposit	\$50.00	Due Now
Second Deposit	\$250.00	Due September 15
Third Deposit	\$250.00	Due October 15
Fourth Deposit	\$650.00(approx)	Due November 15

Lift tickets (\$35/day) Full Amount Due December 1

For information and reservations-

- **Contact:** Don Hammond & Sally Dier
- **Phone:** Sally – 493-6056
- **Email:** Sally – aspendream@juno.com

Niobrara River Weekend

One River, 17 Club Members, 10 Million Mosquitoes

This year we tried something a little different .and it was a huge success. Instead of our regular campground at Smith Falls we tried a private campground called Fritz's Island, which is further downstream. I never did see the island but the campground was great. We had our own secluded camping area right next to the river. Primitive, yet including such things as an out of the view Porta-Potty only yards away, made this the perfect campsite. We spent each of our two evenings telling jokes around the campfire while sampling some wines that Andrea and Dennis Mc picked up from a recent trip to an Iowa winery. Oh, and lots of Smores .both nights.

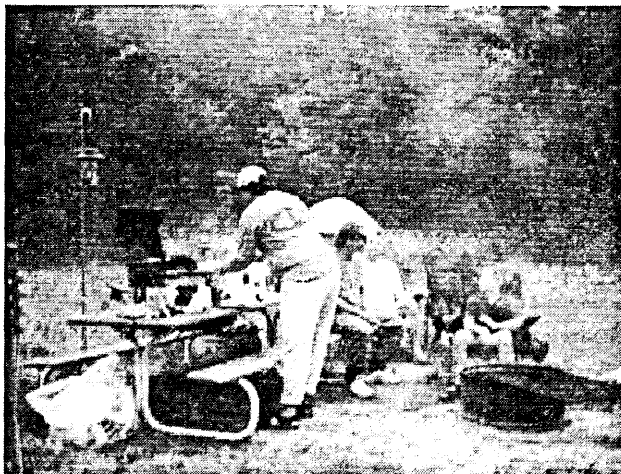
Saturday morning (July 19th) we caught our bus to the starting point of the river. We were joined on the bus by some rather festive young people who had evidently started drinking beer early that morning (or were still going from the previous night). Well, at least one of them had been. He was no problem and actually made the ride entertaining.

Our launch point this year was at Berry Bridge, a little further down river than we normally start. The river depth was just right, the weather was perfect, and it was everything we could have hoped for. We had 13 tubes, all lashed together and one couple in a canoe. The ride down the river was relaxing AND exciting. Every once in a while we would encounter hostile natives (those tubers younger than us with more powerful squirt guns .I'd hardly call them guns .they were more like cannons). But as the day was hot, reaching triple digits on the thermometer, the friendly spray was a welcome relief.

All the times I have tubed down this river I have thought someone could make a killing selling ice cream from the shore. Well, some entrepreneur had the same idea and is making it happen. About an hour down stream we encountered a little log building selling ice cream, burgers and beer. That and bathrooms made this a "must see" spot on our journey.

Shortly after we got underway we made a stop at Smith Falls, the largest waterfall in Nebraska. It's just a short walk from the river and very lovely to view, as well as refreshing to stand under. After a quick lunch back at our tubes we were underway again. The rest of our trip down the river was pretty uneventful. We made many stops to cool off in the river and the three boys, including my two younger ones, spent most of their time off the tubes and floating down the river with their life jackets. I think we all made many new friends on this trip. I know I did.

Ron Bechdolt



Ron, Dave, Chris and Aric by the Fire



Andrea and Dennis Setting Up Their Tent

THE 2003 MONARCH SKI TRIP AND WEIGHT LOSS PROGRAM (FOND MEMORIES OF A WINTER WEEKEND)

The TV weathercaster said it reached 102 degrees Saturday. This heat brings back fond memories of the March 2003 Monarch ski trip.

The trip ran 1 - 4 Mar 2003. Lori Bishop, Teri Hammon, Terri Johnson and I left a day early, and met up with Denver OSC member Kerry Barnes. We skied Copper Mountain, Saturday, 1 Mar, and drove to Monarch Saturday night. Lori quickly had trouble with the altitude at Copper, but was able to find a handsome ski patroller to distract her. The "eri's" and I had an enjoyable, exhausting day and met Lori afterwards. A 3 hour drive later, we arrived at Monarch Mountain Lodge (MML) late.

Sunday morning discovered Monarch had over 36 inches of new snow. They lived up to their powder reputation. Tree runs off of Hall's Alley, under the right ridge chair lift, were thigh deep or deeper. Ben Novograd discovered stopping wasn't always guaranteed, but the tree he hit was only 4 feet tall. Andy Rabick spent the first morning teaching new member Andrea Collins to ski, Ron Lipe and I took over in the afternoon. She was skiing blue runs by the end of the day. We skied in large groups all 3 days. The area is only 670 acres. After each day of skiing, we met for après ski in the base lodge lounge. Lori continued to have trouble with the altitude and was not able to ski the rest of the trip. The MML is at 9600 ft. The ski area is higher with a base at 10,790 ft. Others also felt the altitude. We were glad the lodge was lower and the rooms were large and comfortable.

After each day's skiing, we hit the hot tub. MML has two outdoor hot tubs and an indoor pool, which we put to good use. In the hot tub, Ben kept track of each evening's snowfall as it piled up on his cap. Andrea delighted us with her synchronized swimming. The first night two non-club teenagers ran across the slippery hot tub deck and hurled themselves over the wall, much to our horror. But the boys only fell a few feet and landed in snow without injury. After the first night's hot tubbing, we learned the restaurant wasn't serving dinner. All the Colorado locals had departed, leaving us among a handful of guests. We dashed down to Salida, only to witness the last few fast food places closing. Vegas it ain't! Hungry, we returned to the lodge, microwaved burritos in the souvenir shop and went to bed dreaming of breakfast.

Monday morning we learned the restaurant also wasn't serving breakfast or lunch due to the lack of guests. Angry, but now starving we pushed on. Luckily, the ski area's day lodge served breakfast and we were able to eat. It snowed heavily Sunday night, and grooming on blue and black runs was minimal. Kerry Barnes couldn't get enough of a run called SHAGNASTY, which those of you with British backgrounds will no doubt appreciate. The run looked like those pictures you see of mountains in Antarctica, with 30 mph winds and blowing snow. Our inability to see was, in fact, a good thing. It kept us from seeing the steep drop off the cornices. Ignorant but now fed, we hurled down the slope through the bumps and into the tree-lined part of the run. Other runs like Tango, Great Divide, Ticaboo and Picante proved exciting too. Some had so much snow we simply fell into the fluffy bumps to stop. Done correctly, it was a sure-fire technique. Andy Rabick took a group down High Anxiety, the area's steepest run. We spent 20 minutes getting to a tree run Teri spotted from the lift, only to find it was a green run (OK, a double-green), which luckily we all made it down.

Monday night we pigged out at the Country Bounty restaurant, our trip party. Tuesday night we ate at a Chinese restaurant with no guests or employees of Chinese ethnicity, but as Don Hammond would say... lot's of chopped celery. Their busiest night of the year is Christmas. We also found a fabulous bar in Salida called the Victoria Tavern, where we were treated to a fireball twirling display in the adjacent park by a town local. She performs when the cops aren't watching. Gotta love those eclectic mountain people!

A foot of snow greeted us Wednesday morning (a parting gift, no doubt) from which we dug out our vehicles. Great snow, great skiing, great hot tubbing and we all lost 5 pounds!

Brian Moore, Trip Captain

OMAHA SKI CLUB MEMBERSHIP APPLICATION

JUNE 2003 - MAY 2004

MEMBERSHIP STATUS: NEW ___ RENEWAL ___ FAMILY \$25 ___ SINGLE \$22 ___

LIST MEMBER INFORMATION - - - PLEASE PRINT CLEARLY

FIRST NAME	M.I.	LAST NAME	DATE OF BIRTH	SEX
1. _____	_____	_____	_____	_____
2. _____	_____	_____	_____	_____
3. _____	_____	_____	_____	_____
4. _____	_____	_____	_____	_____
5. _____	_____	_____	_____	_____
6. _____	_____	_____	_____	_____

ADDRESS _____

CITY _____ STATE _____ ZIP CODE _____

HOME PH. _____ WORK PH. _____

EMAIL _____ (check this box if ok to publish e-mail address in club directory)

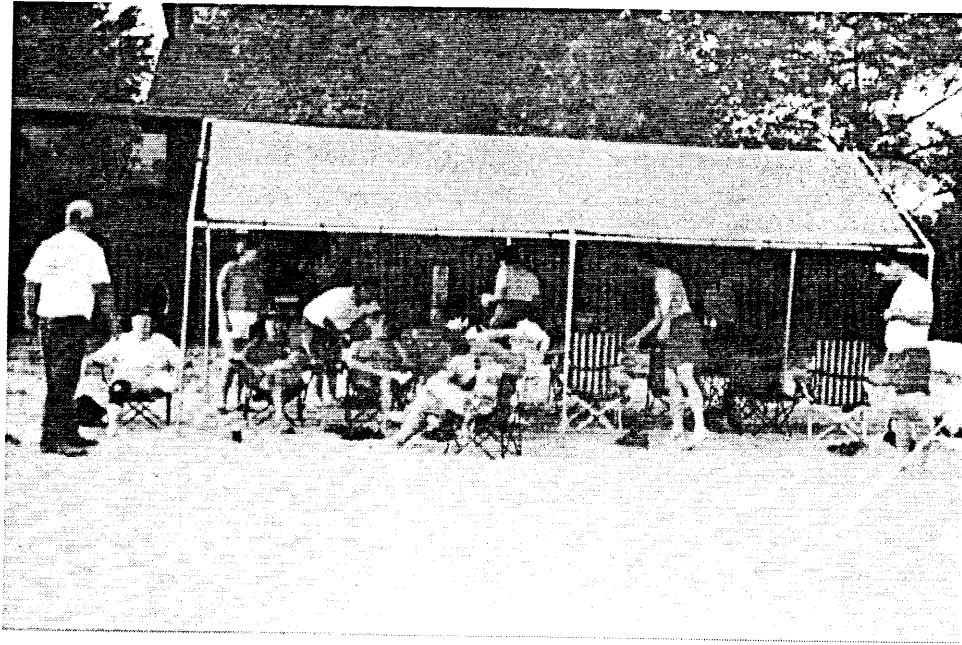
COMMENTS _____

REFERRED BY _____

NOTE: BY SIGNING THIS APPLICATION I RELIEVE THE OMAHA SKI CLUB, INC. (OSC) OF ANY RESPONSIBILITY FOR ACCIDENT OR INJURY I INCUR WHILE PARTICIPATING IN ANY OSC ACTIVITIES. I ALSO CERTIFY THAT I AM OF LEGAL DRINKING AGE IN THE STATE OF NEBRASKA.

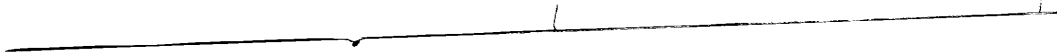
DATE _____ SIGNATURE (MUST BE SIGNED AND DATED) _____

[OSC USE ONLY] MEMBERSHIP NO. _____ BD. _____ TR. _____ NL. _____



Relaxing on the beach - Beach Party at Ron Rohrs' place,
August, 2002

MAP AND DIRECTIONS TO RON ROHR'S HOUSE IN
FREMONT (FOR BEACH PARTY SATURDAY JULY 27)



EA,
/
S
/ |
+

ND
to

C
/ |
K
P
- |
F

Please note, there is limited parking at Ron's house. Parking is available where the "X" is on the map (right before the bridge), and may be available in the neighborhood also. When you arrive, check with Ron to see what the situation is. We will shuttle people if necessary. Ron's phone is (402) 727-6477 if you have any questions.

BOARD OF DIRECTORS

PRESIDENT

Pat McCall.....345-1881 (H)
president@omahaskiclub.org 342-8898 (W)

VICE PRESIDENT/TRIPS

Ron Bechdolt.....498-8969 (H)
vp-trips@omahaskiclub.org

VICE PRESIDENT/ACTIVITIES

Sally Dier.....493-6056 (H)
vp-activities@omahaskiclub.org

SECRETARY

Teri Hammon.....571-4517 (H)
secretary@omahaskiclub.org

TREASURER

Don Hammond.....493-5653 (H)
treasurer@omahaskiclub.org

COMMITTEES

MEMBERSHIP

Barb Larson.....991-6997 (H)
membership@omahaskiclub.org

NEWSLETTER

Dave Lawler.....328-9278 (H)
newsletter@omahaskiclub.org 328-3982 (W)

RACE

Phil Bintz.....(712) 483-2668 (H)
race@omahaskiclub.org

MARKETING/PUBLIC RELATIONS

Brian Moore
marketing@omahaskiclub.org.....871-4256 (cell)

FSA DIRECTOR

Craig Larson.....991-6997 (H)
fsa-director@omahaskiclub.org

OSC Website...www.omahaskiclub.org

Moving?

Tell us before you move--the Post Office will NOT forward the OSC Newsletter because of its 3rd class postage classification. Notify Dave Lawler of changes.

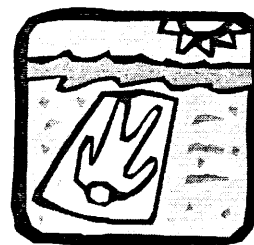
P.O. BOX 3104
OMAHA, NE 68103-0104



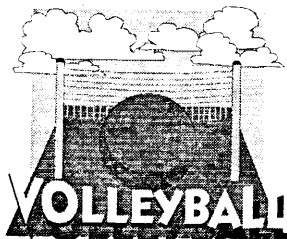
Beach Party

Ron Rohr's home in Fremont

Time: noon- ????



Ron will provide the grills. Please bring meat and a side dish to share and your beverage. Ron will have a volleyball net set up and a pontoon boat. Bring your swim suits and beach towels and extra lawn chairs. See map inside on how to get to Ron's place



PRSR STD
U.S. Postage
PAID
Omaha, NE
Permit
No. 1237