

March 2023 Newsletter

www.omahaskiclub.org

2022-2023 Trips

January 2-7 - Winter Park, CO, drive out. Completed.

January 27-February 3 – Whitefish, MT, FSA trip, fly out. Completed.

February 25 - March 4 - Mammoth, CA CMSC trip, fly out.

Completed. See the article on pages 5-8.

March 19-24 - Summit County, CO, drive out.

See the flyer on page 9.

Upcoming Events

March 16th (Thursday) 6:30 p.m.

Board Meeting

Peony Park Hy-Vee #5, 7910 Cass St, Omaha

At the north end of 78th St beyond Cass St. All members welcome.

March 19th (Sunday) to March 24th (Friday)

Summit County Trip

See the trip flyer on page 7.

April 5th (Wednesday) 6:30 p.m.

Board Meeting

Peony Park Hy-Vee #5, 7910 Cass St, Omaha

At the north end of 78th St beyond Cass St. All members welcome.

April 12th (Wednesday) 6:00 p.m.

Social Gathering and Summit County Post-Trip Party

Jams Midtown, 7814 Dodge Street, Omaha

On the NW corner of 78th St and Dodge St. Everyone welcome.

May 5th (Friday) 6:30 p.m.

Board Meeting

Peony Park Hy-Vee #5, 7910 Cass St, Omaha

At the north end of 78th St beyond Cass St. All members welcome.

**Membership
page 2**

**Trips update
page 2**

**FSA ski week wrap up
pages 3-4**

**Mammoth trip
pages 5-8**

**Summit County trip flyer
page 9**

**Membership and trip
applications
pages 10-11**

BOARD OF DIRECTORS

PRESIDENT

Phil Bintz

(402) 630-4753

VICE PRESIDENT TRIPS

Teri Hammon

(402) 680-0971

VICE PRESIDENT ACTIVITIES

Pebbles Forster

(402) 949-2174

SECRETARY

Ben Novograd

(402) 291-5704

TREASURER

Mark Johnson

(712) 623-9463

Membership

We would like to welcome our newest members, **Greg and Adrienne Duracinski and their children Annabel and Lucas**. They are from the Omaha area.

This family was referred by Mark McCracken. Welcome and we look forward to meeting you at one of our gatherings soon!

As a result of the referral, Mark will receive a \$25 Trip voucher that can be used for any trip through next season.

Any member will receive trip credits by referring/recruiting new members.

This year, several members helped grow our membership.

Thank you to the following members:

Jamie Lewis-2 referrals

Donna Stein-1 referral

Teri Hammon-1 referral

Mark McCracken-1 referral

Cindy and Mark Johnson-3 referrals

Julie Weighman-1 referral

Teri Hammon

Membership

COMMITTEES

MEMBERSHIP

Teri Hammon
(402) 680-0971

NEWSLETTER

Ben Novograd
(402) 291-5704

RACE

Phil Bintz
(402) 630-4753

FLATLAND SKI ASSOC. Rep.

Teri Hammon
(402) 680-0971

PUBLIC RELATIONS

Pebbles Forster
(402) 949-2174

WEBSITE

Ben Novograd
(402) 291-5704

Trips Update March 2023

Unfortunately, the Mammoth trip was not quite what we expected. Mother Nature sometimes does not cooperate the way we would like. Who would have thought that a trip would be cancelled due to too much snow! But we will put that far behind us as we move on to the next trip to Summit County.

This is the last call for this trip! So far, we have five members joining us. If you would like to join us, let me know ASAP as I will cancel rooms on the 17th.

Stay tuned...FSA will announce the location of next year's trip soon. We have a meeting on March 14th to decide the location. It will be a week-long trip!

I will be leaving soon for the Mountain Travel Symposium. I have some ideas where to go for next year. If you have any suggestions, please email them to me at dragonsrock@cox.net. I would love to hear where you want to go. Next year, CMSC will be going to Banff Canada. Would you like to go?

Update on our injured persons:

Mary is healing without surgery and enjoying golf again. Candy is healing after her surgery. Simon is healing and will be back on the slopes next year. He only got 91 days this year! Maggie is recovering and getting stronger every day. If you want their stories, ask them! Take care and next year will be great!

Teri Hammon

Vice President of Trips

dragonsrock@cox.net

FLATLAND SKI ASSOCIATION

2023 Ski Week Wrap Up



CONGRATULATIONS to all of the clubs and individuals on your outstanding performance at this year's Ski Week! Special congratulations go to those taking top honors:

- #1 – **Kansas City** (2,446 Points)
 - #2 – **Tulsa** (2,290 Points)
 - #3 – **Oklahoma City** (2,124 Points)
 - #4 – **Cornhuskers** (1,430 Points)
 - #5 – **Omaha** (851 Points)
 - #6 – **St. Louis** (849 Points)
 - #7 – **Wichita** (231 Points)
 - #8 – **Topeka** (74 Points)
- Columbia** (Did not participate this year.)

Each club's Race Director received a copy of all of the race results, so for more details contact your club's Race Director. Results have also been posted at the FSA's Website:

www.flatlandski.org

For more information on all things related to the FSA, don't forget to check the Website on a regular basis. Also, please make sure that your club keeps the Webmaster and the FSA Secretary updated on all things related to your club.

OTHER SPECIAL AWARDS were also handed out at this year's banquet. The FSA Board awarded this year's **Judy Cup** to **Candy Girth** of the St. Louis Ski Club in recognition of her many years of service as the club's FSA Representative, promoting the FSA, and her service holding several FSA offices in the past. The Race Committee awarded this year's **Dave Vannett Trophy** to **Bill Nees** of the Kansas City Ski Club. Bill has been a Flatlander for many years, served numerous times as his club's Race Director, and has served as the FSA's Race Director twice. Congratulations to both Candy and Bill!

For more information on both of these special awards, and their history, visit our Website!

We're also happy to announce that **\$4,450** was raised to support Dream Adaptive Recreational Sport this year. We set a *great* new record!

Final Thoughts from our FSA President, Teri Hammon

It's been a few weeks now since we returned home after another great Flatland Ski Association (FSA) Ski and Race Week. I hope you, like me, had a great time at Whitefish. It was wonderful to return to Whitefish and I hope those of you who experienced the resort for the first time, were pleasantly surprised. I must say it was a fantastic resort with great snow, a fun location, a great staff and friendly people.

I want to thank all of you for your support of the FSA, both long-time members and those who joined us for the first time this year. I enjoyed seeing you and really hope that you'll make the Flatland Ski Week a regular part of your skiing experience each year. It has been a pleasure serving as your president for the past year, and I look forward to being able to serve as Past-President for the 2023-24 year.

I would also like to thank all the FSA officers, board members and all the people who volunteered their time to help make Flatlands possible. Without volunteers our ski clubs and the Flatland Ski week would not function or be able to be held year after year.

We look forward to seeing everyone next year, and we will let you know as soon as a location has been finalized. We're just as anxious as you to find out where that will be!

Comments from 2023 FSA Activities Director, Paul Snyder

Hello to all who attended the FSA ski and race week at Whitefish Mountain in Montana.

I certainly hope that everyone made it safely home; I know that there were some airline "issues" on the return trip for many of you, myself included!

It was a great pleasure once again serving as your Activities Director for this year's event at Whitefish. It's always interesting dealing with a new venue and getting to know the people involved. Your FSA officers and board work hard to plan these events each year, so we really hope you had a good time. If you do have any feedback about the event, *please* share it with your club's FSA representative, so they can share it with the entire board. Your constructive feedback helps us do our jobs. (*Keeping in mind we have no control over weather, airlines, or chair lifts!!!*)

One of the things your FSA board struggles with is trying to balance cost and activities. If you're like me, we certainly like to have the best of everything ... but we'd rather not pay the premium. But each year it does become a bigger concern, just due to the nature of the sport and the resorts. So we're trying to "think outside the box" as we move forward, and we're always open to practical new suggestions.

And, of course, I personally want to thank all of the Trip Captains from all of the clubs. You were so helpful as we worked to get orders in, passes, shirts, and other things distributed, and the like.
THANKS SO MUCH!

Again, thank you for the opportunity to serve as your Activities Director for 2016, and I hope to see you at next year's FSA event!

As with most organizations, nothing gets done in the FSA without many dedicated volunteers! Our thanks to the officers who served in 2022-2023:

Teri Hammon – President
Daphne Reitz – Vice President
Melissa Breeding – Secretary
Kelli Kinnamon – Treasurer
Paul Snyder – Activities Director
Scott Branum – Race Director
Matt Knechtel – Race Data Coordinator
Ryan Breeding – Past President

And, of course, a big thanks to all of the individual club representatives and race directors who freely give their time!

CMSC Mammoth Trip

February 25 – March 4, 2023



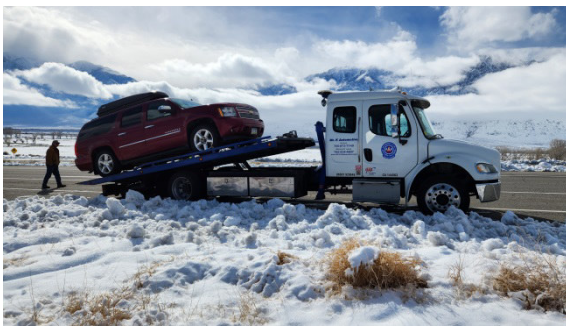
The Great Adventure through the eyes of the trip captain...

CMSC aptly themed this trip “Ice Age meets Stone Age” for a reason!

We started out on Wednesday, February 22nd, hoping to be ahead of the storm. It took 12 hours to get to Frisco due to freezing rain and ice in eastern NE that later turned to snow and blowing snow going down I-76 and I-70 to the tunnel and into Summit County. It was a white knuckle drive.

Thursday, we enjoyed skiing good snow at Copper.

Friday, Phil, Jamie and I left for Ely NV. It was snowing very hard over Vail Pass and through Glenwood Canyon. The 9 hour trip turned into 11 hours. We stayed at the Ramada Inn in Ely NV for the night and left for Mammoth early Saturday morning. We traveled as far as 56 miles east of Bishop CA and the road was closed. We were still in Nevada. There was a semi jackknifed and we were waiting on the tow truck to clear the road. This was over 90 minutes of waiting on the side of the road. The roads were bad, but the plows were at work, at least on the Nevada side of the pass. Once the semi was cleared, the Highway Patrol escorted us to Benton NV and held all the big rigs there, wouldn't let them travel over Montgomery Pass. They let us go, but told us that it may be bad road conditions at the California state line and they didn't recommend travel, but it was our choice. I made the choice to continue, but was driving on unplowed, deep, heavy, wet snow in 4-wheel drive the entire way going 20 miles an hour. It was treacherous to say the least. We finally made it to Bishop CA to find out that Highway 395 from Bishop to Mammoth was still closed. It had been closed for two days prior to our arrival. It is the only road into Mammoth. So we had to find a hotel.



The rooms that CMSC were holding had been released and there were no available rooms in Bishop, or Big Pine or anywhere other than 57 miles South of where we were in Lone Pine. The power had been out in Bishop and very few restaurants were open. We finally found Whiskey Creek and had dinner there, then set out for Lone Pine CA. We found a room at the Trails Motel, a little hole in the wall motel, but clean, for \$150 a night. So there we were for the night. We were supposed to be in Mammoth at the Juniper Springs Condos tonight. What an adventure so far!

Sunday morning, we leave Lone Pine behind us, get gas and doughnuts. Looks like Highway 395 north is open, but slow. We get 13 miles north of Bishop and the Highway Patrol had the road blocked. They say it is open, but will escort us through the pass. I shut the car off and wait for the escort. When the escort vehicle shows up, I turn the key and “click”. Crap! We get the car onto the shoulder and I call AAA. Two hours later, a driver calls me. He says they are not towing today and can only jump start vehicles. He was dispatched from Mammoth Lakes. He says that I need to call AAA back and have someone dispatched from Bishop. Finally, 2 hours later, we get someone from Bishop that will tow us back to Bishop. Thank goodness Phil knows how to work on cars! They towed us to O'Reilly's where Phil bought a starter and borrowed tools to install it in their parking lot. Two hours later, now 5:30 PM, we have a running vehicle and are on our way to Mammoth. Phil is soaked from head to toe from lying in slush to change the starter. We finally get to Mammoth. It is snowing and blowing again. We find Juniper Springs. The roads are like tunnels that are some 20+ feet high. You cannot see the houses or the





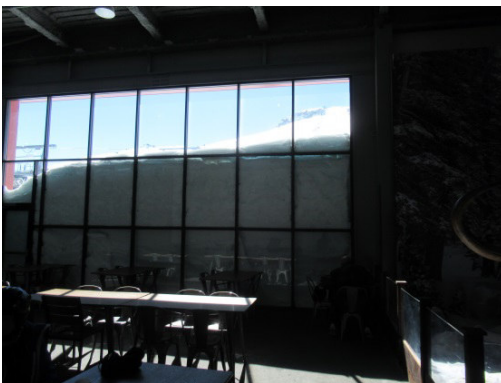
businesses. We pull up to the main lobby at Juniper Springs. We find that CMSC has canceled *all* the rooms. They were able to reinstate our condo and we had the valet unload the luggage, only to have him grab my small bag and rip out the zipper. Now to deal with that too! We also did laundry and got Phil warm and dry.

I met up with Vicki and Noreen at the Alpenhof. CMSC had canceled the entire trip and the events. Everyone was stranded in Reno, some in Denver, LA and Las Vegas. Pat was in LA at his brother's house and couldn't get to Mammoth due to roads being closed. Those in Reno couldn't get in due to Highway 395 north of

Mammoth being closed and remaining closed the entire week. Ben and Kim were in Reno. Their skis were in Mammoth. They stayed at the Silver Legacy Hotel and were going to be bussed to Mt Rose, Diamond Peak or Palisades. There was so much snow that the busses weren't running. By Wednesday, they had had enough and flew back home without skiing one run. Only 16 of the 166 people actually made it to Mammoth, with the four of us included in that count. Kelsey flew into Bishop on Monday and made it to Mammoth before Highway 395 was shut down again due to blowing snow.



Sunday evening we fixed spaghetti and watched the snow. Monday, the lifts were delayed and only four opened. We did not ski this day because we were exhausted from the drive out. Winds were 30 mph. The snow continued and the wind picked up. We walked to Eagle lodge and back then went grocery shopping, using GPS to find the store behind the large mounds of snow. We had burgers for dinner. We sat in the hot tub for a while under blizzard conditions. It did wonders for the hair. I wore my stocking hat and even that was frosted over. There was snow up to the second floor of the building, right off our deck. Around one of the hot tubs, a large cornice formed, making a cave like hot tub experience. The 6 foot fence had snow piled higher than the fence with cornices hanging over the top. It was unbelievable how much snow was here.



Tuesday, it was still snowing and blowing. The Eagle and Canyon Lodge areas were open. We skied until lunch and then went shopping. Jamie stopped at Surefoot for a boot adjustment and we went to several sporting goods stores looking for small bags to replace the one that was ripped. I was told I needed to get one in Mammoth before I left to replace the one I had. It was snowing and blowing again this evening, Highway 395 to Bishop was closed again. We spent the evening at the condo. We had pulled pork sandwiches and salad for dinner.

Wednesday, we had received another 27 inches of snow in the last 24



hours. Highway 395 was still closed and only 4 lifts were expected to be

open. We went out and skied around the Eagle and Canyon areas. We had a possible break in the weather now through Saturday from this "Atmospheric River" that has brought too much snow to the area, over TEN feet just this week! It really was too much snow. The grocery stores were running low on items since I-80 was also closed for a couple days. The Highway patrol was not letting the semis pass yet. Highway 395 from Bishop to Mammoth opened again this afternoon. This was crazy!



Thursday, the sun was shining and the wind had stopped blowing. We skied all the way over to the Main Lodge, took pictures with the Mammoth that was buried in snow to mid-belly and enjoyed the entire day in the soft, fresh snow. We were amused by people in the deep powder under the lifts, falling and being buried in the snow. Patrol had some areas under the lifts closed since the snow was so deep, which put the lifts too low to the ground. Other areas were dug out in order for the lift to even run. Again, it was unbelievable how much snow they had received. That evening we enjoyed the hot tubs and went out to Noodle-ly's for dinner. We had Pho bowls



and learned about Boba drinks. Boba is the sweet taste of the tea paired with the chewy tapioca balls. The pearls offer a "break" from the boring consistency of the drink. It is also called bubble tea or Boba Milk Tea. Jamie got the Horchata Boba that we all tasted. It was very sweet with hints of cinnamon and vanilla. Interesting drink.

Friday, we saw Kelsey off and then went to ski. The snow was now sun baked and cruddy and the amount of people on the mountain had increased. I called it a day before lunch while Jamie and Phil took the gondola to the top. The views were spectacular I am told, but the skiing down was a little tough. We managed to survive the four days of skiing

that we had. We had leftovers for dinner and retired for the evening. Tomorrow another storm was coming and we wanted to get out before they closed the roads.

Saturday, we packed everything and left Mammoth. It was overcast, but the roads were dry. We made it to Ely NV and it started snowing. It continued through the evening. We stayed at a fairly new property, Holiday Inn & Suites, which was located next to the Prospector Hotel & Casino where we stayed last time we went to Mammoth. We toured through the Prospector then went to the Railroad Museum and got to see some interesting engines in the wheelhouse. The guys in the shop were working and took time to answer any questions we had. It was fun and passed the time. We had dinner at the Cellblock Steakhouse. The chicken and prime rib was delicious. We even got to sit in our own "cell", complete with bars on the door!



Sunday morning, we had a wonderful hot breakfast at the hotel and got back on the road. We had about 15-20 miles of snow packed roads before they dried out. I am still amazed at the straight stretches of highway through the valleys, straight for some 20-25 miles through open range. The landscape looks very barren. We did see several deer, two coyotes and a badger! There were many crows and small birds along the roadside. These smaller birds seemed to be attracted to a vehicle moving at 80 mph. I only had three of them attached to the front end of the vehicle. Fortunately for us, they were small. The roads remained dry for the rest of the trip home.



We stayed one more night in Summit County before returning home on Monday. What an adventure!

Mammoth has received over 10 feet of snow since we started our journey. Highway 395 between Mammoth and Reno is still closed and will remain closed while they clear avalanches that continue to plague the area around Conway Summit. If I hadn't been there to see the piles of snow for myself, I don't think I could imagine what it would have looked like. I can't say that the skiing was spectacular, because the snow was windblown and not light and fluffy. We tried to stay positive and have fun. The snow was a bit overwhelming. I am sorry that Ben, Kim and Pat didn't get to ski. Hopefully, the next trip goes without any problems whatsoever! I was never so glad to be home and have the *Ground Hog Day* end!

We will sort through all of the cancellations and charges with CMSC and the tour operator. Once that is complete, we should be refunding those who did not make it, those that partially made it and those who made it, but whose events were cancelled. Stay tuned...



Cheers for better trips in the future!
Trip Captain
Teri Hammon



Spring Fling in Summit County Colorado

You decide which resort you plan to ski!

March 19-24, 2023

Cost: \$495

ONLY 12 spots available



Join us for spring skiing at Copper or wherever you want to travel from Silverthorne! Enjoy great snow and warmer temperatures on the mountains around Summit County. This will be a great near the end of season trip! This trip includes:

- **Five nights** lodging at the Best Western Ptarmigan Lodge, 652 Lake Dillon Drive in Dillon CO. Hotel style double queen beds, refrigerator and microwave in each room. Check-in 3 PM, check-out before 11 AM
- Free area shuttle which can take you to Copper Mtn (IKON), Breckenridge (EPIC), Keystone (EPIC), Arapahoe Basin (IKON) or head to Vail (EPIC) or Beaver Creek (EPIC) for the day. All resorts are accessible on the Summit Stage or drive to the resorts.
- Hot tub and steam room
- Free continental hot breakfast daily, free parking, free Wi-Fi
- Welcome Party
- Lift tickets additional. If you do not have an EPIC or IKON Pass, purchase lift tickets online or purchase a four pack in advance. Lift tickets can be obtained through IKON or EPIC, or through the resorts' website, or through liftopia.com.

Trip Captain: Teri Hammon
Email: dragonsrock@cox.net
Phone: 402 680-0971

Membership is required in either the Omaha Ski Club or one of our reciprocal membership clubs. No additional dues will be required.

(Prices subject to change)

Payment Schedule:
\$100 due at signing
\$200 due February 1, 2023
\$195 due March 1, 2023

Mail payments to:
Omaha Ski Club
P O Box 3104
Omaha NE 68103-0104

**OMAHA SKI CLUB MEMBERSHIP APPLICATION
JUNE 2022 – MAY 2023**

MEMBERSHIP STATUS: NEW ____ RENEWAL ____

FAMILY \$25 ____ (\$30 if paid after September 30, 2022)

SINGLE \$22 ____ (\$27 if paid after September 30, 2022)

MEMBER INFORMATION - - - PLEASE PRINT CLEARLY

Name: _____ Spouse: _____

Street Address: _____ City: _____ State: ____ Zip: _____

Home Phone: (____) _____ Alternate Phone: (____) _____

Email Address: _____

Check this box if you are 21 years or older. For family membership, list all dependent minors on back of application.

If new member, how did you hear about the club? _____

Ski/Snowboard destinations you're interested in: _____

Activities you're interested in: Biking _____ Bowling _____ Dinners _____ Other _____
(please list)

Other Interests: (please list) _____

NOTE: BY SIGNING THIS APPLICATION I RELIEVE THE OMAHA SKI CLUB, INC. (OSC) OF ANY RESPONSIBILITY FOR ACCIDENT OR INJURY I INCUR WHILE PARTICIPATING IN ANY OSC ACTIVITIES. I ALSO CERTIFY THAT I AM OF LEGAL DRINKING AGE IN THE STATE OF NEBRASKA.

SIGNATURE _____ **DATE** _____
(Must be signed and dated)

[OSC USE ONLY] MEMBERSHIP NO. _____ BD. _____ TR. _____ NL. _____

Mail to: Omaha Ski Club, P.O. Box 3104, Omaha, NE 68103-0104



TRIP APPLICATION

(Required for each individual on the trip) **PLEASE PRINT LEGIBLY**

TRIP DESTINATION _____ TRIP DATES _____

LEGAL NAME _____ (exactly as it appears on Driver's License)

DATE OF BIRTH _____ AGE _____ SEX _____

STREET ADDRESS _____

CITY _____ STATE _____ ZIP CODE _____

PHONE _____ E-MAIL _____

EMERGENCY CONTACT:

NAME _____ RELATIONSHIP _____ PHONE _____

I PREFER TO ROOM WITH _____

DO YOU PREFER TO FLY (if offered) _____ IKON/EPIC PASS # _____

THE OMAHA SKI CLUB MEMBER SIGNING THIS APPLICATION AGREES AS FOLLOWS: The member has read the OSC trip policies on the bottom of this application and understands and agrees to be bound by them as a condition of participation in this trip. The member further agrees that the club, its directors or committee chairmen shall bear no financial responsibility to members in the event of a delayed departure or return of a trip, or for cancellation of a trip except as provided in items 7 through 10 of the trip policies, nor shall they be liable for any bodily injury, property damage, loss of personal property, or death sustained by or caused by any member on a trip. Those individuals causing property damage at the lodges, condos, busses, ski areas, etc. shall bear the full legal and financial responsibility for the damages. It is a condition of membership in the club that any individual shall be deemed to have accepted these responsibilities and limitations of liability as a consideration of joining the club and participating in this trip.

SIGNATURE _____ **DATE** _____

[OSC use only] deposit: amount paid _____ date _____ ck no _____

OMAHA SKI CLUB TRIP POLICIES

- 1) Trip captain is the final authority on and during the trip.
- 2) Club members will conduct themselves in a mature manner at all times.
- 3) There will be a \$28.00 charge (subject to change according to bank fees) on any returned check.

TRIP SIGN-UP, DEPOSITS AND PAYMENTS

- 4) Only members in good standing with dues currently paid to the Omaha Ski Club may sign up for a trip. Children under the age of 19 must be accompanied by a parent or guardian on the trip. A trip application for a child under the age of 19 must be signed by a parent or guardian of the child.
- 5) By signing up for a trip a member agrees to pay the Club the full cost of the trip applied for, subject to the provisions for timely cancellation in item #7. Each trip will have its own trip deposit and payment schedule to be set by the trip committee. A deposit is required to sign up for a trip. Failure to meet the payment schedule may result in automatic cancellation from the trip subject to the cancellation fee in item #7.
- 6) When a trip is full the trip captain will start a waiting list. To be placed on the waiting list a member must fill out and sign a trip application and pay the standard deposit for that trip. Waiting list members must meet the payment schedules when moving to the confirmed lists.

CANCELLATIONS AND REFUNDS

- 7) Unless otherwise listed in individual trip information, **cancellations prior to 60 days before the trip departs will result in a cancellation fee of \$50.00; cancellations less than 60 days before the trip departs will result in a cancellation fee of \$100.00 if the trip goes full, or liability for the full cost of the trip if the trip does not go full.** Any cancellation fees or penalties may first be deducted from payments the member made for the trip. Medical cancellations will be reviewed by the Board for refund determination.
- 8) Transferring from the waiting list on one trip to a confirmed list on another trip will be done with no cancellation fee. Refusal to move from the waiting list to the confirmed list will constitute automatic cancellation subject to the cancellation fee in item #7 above.
- 9) If a trip is cancelled by the club, all money paid to the club by a member for that trip will be refunded.
- 10) All members on the waiting list when the trip departs will receive a full refund.
- 11) No refunds will be made until after the trip returns.

BUS TRIPS

- 12) Smoking on buses is prohibited.
- 13) Any time the bus stops enroute to its destination, passengers leaving the bus will do so at their own risk.
- 14) The Omaha Ski Club will not provide alcoholic beverages for any bus trip. If any members wish to consume alcoholic beverages on the trip, they can do so at their own expense, and assume all risks and liabilities associated with such consumption.